



2003 AMC 12B

For more practice and resources, visit ziml.aretteam.org

The problems in the AMC-Series Contests are copyrighted by American Mathematics Competitions at Mathematical Association of America (www.maa.org).



Question 1

Not yet answered

Points out of 6

Which of the following is the same as

$$\frac{2 - 4 + 6 - 8 + 10 - 12 + 14}{3 - 6 + 9 - 12 + 15 - 18 + 21} ?$$

- (A) -1 (B) $-\frac{2}{3}$ (C) $\frac{2}{3}$ (D) 1 (E) $\frac{14}{3}$

Select one:

- A
- B
- C
- D
- E
- Leave blank (1.5 points)

Question 2

Not yet answered

Points out of 6

Al gets the disease algebritis and must take one green pill and one pink pill each day for two weeks. A green pill costs \$1 more than a pink pill, and Al's pills cost a total of \$546 for the two weeks. How much does one green pill cost?

- (A) \$7 (B) \$14 (C) \$19 (D) \$20 (E) \$39

Select one:

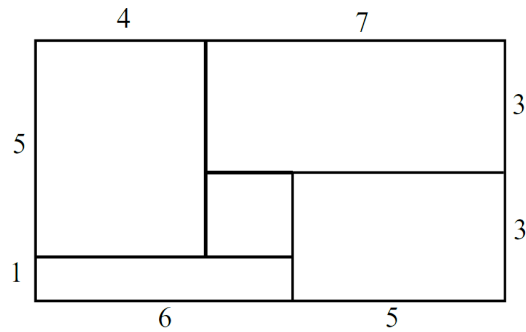
- A
- B
- C
- D
- E
- Leave blank (1.5 points)

Question 3

Not yet answered

Points out of 6

Rose fills each of the rectangular regions of her rectangular flower bed with a different type of flower. The lengths, in feet, of the rectangular regions in her flower bed are as shown in the figure. She plants one flower per square foot in each region. Asters cost \$1 each, begonias \$1.50 each, cannas \$2 each, dahlias \$2.50 each, and Easter lilies \$3 each.



What is the least possible cost, in dollars, for her garden?

- (A) 108 (B) 115 (C) 132 (D) 144 (E) 156

Select one:

- A
- B
- C
- D
- E
- Leave blank (1.5 points)

Question 4

Not yet answered

Points out of 6

Moe uses a mower to cut his rectangular 90-foot by 150-foot lawn. The swath he cuts is 28 inches wide, but he overlaps each cut by 4 inches to make sure that no grass is missed. He walks at the rate of 5000 feet per hour while pushing the mower. Which of the following is closest to the number of hours it will take Moe to mow the lawn.

- (A) 0.75 (B) 0.8 (C) 1.35 (D) 1.5 (E) 3

Select one:

- A
- B
- C
- D
- E
- Leave blank (1.5 points)

Question 5

Not yet answered

Points out of 6

Many television screens are rectangles that are measured by the length of their diagonals. The ratio of the horizontal length to the height in a standard television screen is 4 : 3. The horizontal length of a "27-inch" television screen is closest, in inches, to which of the following?

- (A) 20 (B) 20.5 (C) 21 (D) 21.5 (E) 22

Select one:

- A
- B
- C
- D
- E
- Leave blank (1.5 points)

Question 6

Not yet answered

Points out of 6

The second and fourth terms of a geometric sequence are 2 and 6. Which of the following is a possible first term?

- (A) $-\sqrt{3}$ (B) $-\frac{2\sqrt{3}}{3}$ (C) $-\frac{\sqrt{3}}{3}$ (D) $\sqrt{3}$ (E) 3

Select one:

- A
- B
- C
- D
- E
- Leave blank (1.5 points)

Question 7

Not yet answered

Points out of 6

Penniless Pete's piggy bank has no pennies in it, but it has 100 coins, all nickels, dimes, and quarters, whose total value is \$8.35. It does not necessarily contain coins of all three types. What is the difference between the largest and smallest number of dimes that could be in the bank?

- (A) 0 (B) 13 (C) 37 (D) 64 (E) 83

Select one:

- A
- B
- C
- D
- E
- Leave blank (1.5 points)

Question 8

Not yet answered

Points out of 6

Let $\clubsuit(x)$ denote the sum of the digits of the positive integer x . For example, $\clubsuit(8) = 8$ and $\clubsuit(123) = 1 + 2 + 3 = 6$. For how many two-digit values of x is $\clubsuit(\clubsuit(x)) = 3$?

- (A) 3 (B) 4 (C) 6 (D) 9 (E) 10

Select one:

- A
- B
- C
- D
- E
- Leave blank (1.5 points)

Question 9

Not yet answered

Points out of 6

Let f be a linear function for which $f(6) - f(2) = 12$. What is $f(12) - f(2)$?

- (A) 12 (B) 18 (C) 24 (D) 30 (E) 36

Select one:

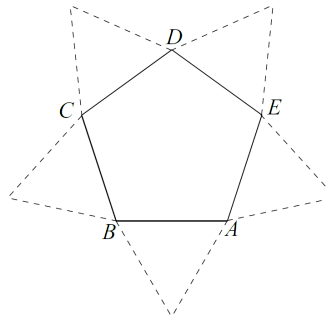
- A
- B
- C
- D
- E
- Leave blank (1.5 points)

Question 10

Not yet answered

Points out of 6

Several figures can be made by attaching two equilateral triangles to the regular pentagon ABCDE in two of the five positions shown.



How many non-congruent figures can be constructed in this way?

- (A) 1 (B) 2 (C) 3 (D) 4 (E) 5

Select one:

- A
- B
- C
- D
- E
- Leave blank (1.5 points)

Question 11

Not yet answered

Points out of 6

Cassandra sets her watch to the correct time at noon. At the actual time of 1:00 PM, she notices that her watch reads 12:57 and 36 seconds. Assuming that her watch loses time at a constant rate, what will be the actual time when her watch first reads 10:00 PM?

- (A) 10:22 PM and 24 seconds
- (B) 10:24 PM
- (C) 10:25 PM
- (D) 10:27 PM
- (E) 10:30 PM

Select one:

- A
- B
- C
- D
- E
- Leave blank (1.5 points)

Question 12

Not yet answered

Points out of 6

What is the largest integer that is a divisor of

$$(n + 1)(n + 3)(n + 5)(n + 7)(n + 9)$$

for all positive even integers n ?

- (A) 3 (B) 5 (C) 11 (D) 15 (E) 165

Select one:

- A
- B
- C
- D
- E
- Leave blank (1.5 points)

Question 13

Not yet answered

Points out of 6

An ice cream cone consists of a sphere of vanilla ice cream and a right circular cone that has the same diameter as the sphere. If the ice cream melts, it will exactly fill the cone. Assume that the melted ice cream occupies 75% of the volume of the frozen ice cream. What is the ratio of the cone's height to its radius?

- (A) 2 : 1 (B) 3 : 1 (C) 4 : 1 (D) 16 : 3 (E) 6 : 1

Select one:

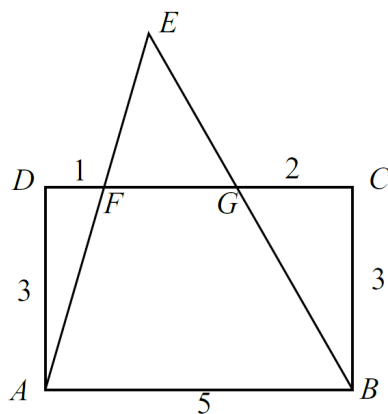
- A
- B
- C
- D
- E
- Leave blank (1.5 points)

Question 14

Not yet answered

Points out of 6

In rectangle $ABCD$, $AB = 5$ and $BC = 3$. Points F and G are on \overline{CD} so that $DF = 1$ and $GC = 2$. Lines AF and BG intersect at E .



Find the area of $\triangle AEB$.

- (A) 10 (B) $\frac{21}{2}$ (C) 12 (D) $\frac{25}{2}$ (E) 15

Select one:

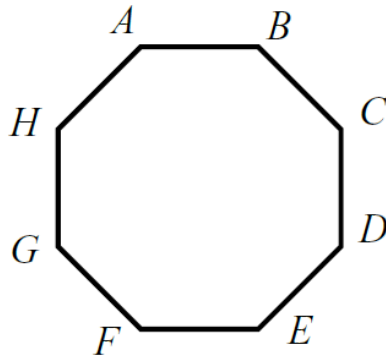
- A
- B
- C
- D
- E
- Leave blank (1.5 points)

Question 15

Not yet answered

Points out of 6

A regular octagon $ABCDEFGH$ has an area of one square unit.



What is the area of the rectangle $ABEF$?

- (A) $1 - \frac{\sqrt{2}}{2}$ (B) $\frac{\sqrt{2}}{4}$ (C) $\sqrt{2} - 1$ (D) $\frac{1}{2}$ (E) $\frac{1 + \sqrt{2}}{4}$

Select one:

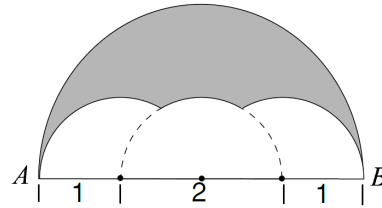
- A
- B
- C
- D
- E
- Leave blank (1.5 points)

Question 16

Not yet answered

Points out of 6

Three semicircles of radius 1 are constructed on diameter \overline{AB} of a semicircle of radius 2. The centers of the small semicircles divide \overline{AB} into four line segments of equal length, as shown.



What is the area of the shaded region that lies within the large semicircle but outside the smaller semicircles?

- (A) $\pi - \sqrt{3}$
 (B) $\pi - \sqrt{2}$
 (C) $\frac{\pi + \sqrt{2}}{2}$
 (D) $\frac{\pi + \sqrt{3}}{2}$
 (E) $\frac{7}{6}\pi - \frac{\sqrt{3}}{2}$

Select one:

- A
 B
 C
 D
 E
 Leave blank (1.5 points)

Question 17

Not yet answered

Points out of 6

If $\log(xy^3) = 1$ and $\log(x^2y) = 1$, what is $\log(xy)$?

- (A) $-\frac{1}{2}$ (B) 0 (C) $\frac{1}{2}$ (D) $\frac{3}{5}$ (E) 1

Select one:

- A
 B
 C
 D
 E
 Leave blank (1.5 points)

Question 18

Not yet answered

Points out of 6

Let x and y be positive integers such that $7x^5 = 11y^{13}$. The minimum possible value of x has a prime factorization $a^c b^d$. What is $a + b + c + d$?

(A) 30 (B) 31 (C) 32 (D) 33 (E) 34

Select one:

- A
- B
- C
- D
- E
- Leave blank (1.5 points)

Question 19

Not yet answered

Points out of 6

Let S be the set of permutations of the sequence 1, 2, 3, 4, 5 for which the first term is not 1. A permutation is chosen randomly from S . The probability that the second term is 2, in lowest terms, is $\frac{a}{b}$. What is $a + b$?

(A) 5 (B) 6 (C) 11 (D) 16 (E) 19

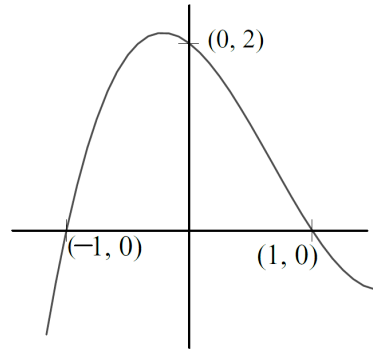
Select one:

- A
- B
- C
- D
- E
- Leave blank (1.5 points)

Question 20

Not yet answered

Points out of 6

Part of the graph of $f(x) = ax^3 + bx^2 + cx + d$ is shown.What is b ?

- (A) -4 (B) -2 (C) 0 (D) 2 (E) 4

Select one:

- A
- B
- C
- D
- E
- Leave blank (1.5 points)

Question 21

Not yet answered

Points out of 6

An object moves 8 cm in a straight line from A to B , turns at an angle α , measured in radians and chosen at random from the interval $(0, \pi)$, and moves 5 cm in a straight line to C . What is the probability that $AC < 7$?

- (A) $\frac{1}{6}$ (B) $\frac{1}{5}$ (C) $\frac{1}{4}$ (D) $\frac{1}{3}$ (E) $\frac{1}{2}$

Select one:

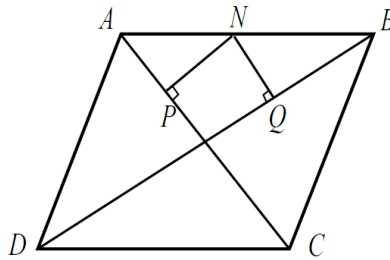
- A
- B
- C
- D
- E
- Leave blank (1.5 points)

Question 22

Not yet answered

Points out of 6

Let $ABCD$ be a rhombus with $AC = 16$ and $BD = 30$. Let N be a point on \overline{AB} , and let P and Q be the feet of the perpendiculars from N to \overline{AC} and \overline{BD} , respectively.



Which of the following is closest to the minimum possible value of PQ ?

- (A) 6.5 (B) 6.75 (C) 7 (D) 7.25 (E) 7.5

Select one:

- A
- B
- C
- D
- E
- Leave blank (1.5 points)

Question 23

Not yet answered

Points out of 6

The number of x -intercepts on the graph of $y = \sin(1/x)$ in the interval $(0.0001, 0.001)$ is closest to

- (A) 2900 (B) 3000 (C) 3100 (D) 3200 (E) 3300

Select one:

- A
- B
- C
- D
- E
- Leave blank (1.5 points)

Question 24

Not yet answered

Points out of 6

Positive integers a , b , and c are chosen so that $a < b < c$, and the system of equations has exactly one solution. What is the minimum value of c ?

- (A) 668 (B) 669 (C) 1002 (D) 2003 (E) 2004

Select one:

- A
- B
- C
- D
- E
- Leave blank (1.5 points)

Question 25

Not yet answered

Points out of 6

Three points are chosen randomly and independently on a circle. What is the probability that all three pairwise distance between the points are less than the radius of the circle?

- (A) $\frac{1}{36}$ (B) $\frac{1}{24}$ (C) $\frac{1}{18}$ (D) $\frac{1}{12}$ (E) $\frac{1}{9}$

Select one:

- A
- B
- C
- D
- E
- Leave blank (1.5 points)